

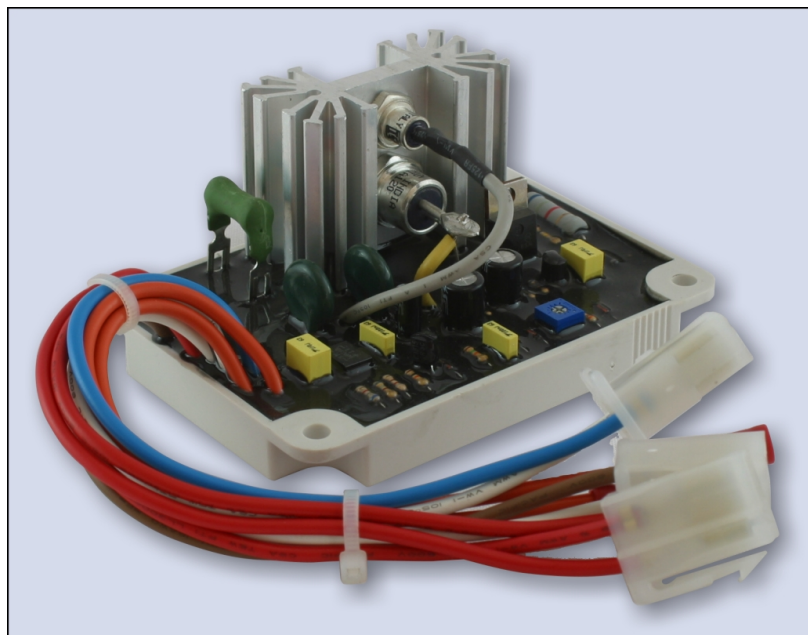
EW05

Self Excited Automatic Voltage Regulator Compatible with 190 / 200 / 210* Type Welder / Generators Regulators

Features

- For Use In 50 / 60 Hz Brushless Generators
- Single Phase Sensing, Same As Original
- External Welding Current Adjustment
- External AC Voltage Adjustment
- Provides Regulation For Welder & AC Output
- Automatic Welder Current Compensation
- Compatible with Original Modules

* Compatible with 190 / 200 / 210 type of various brand AVR



Specifications

Power Input	Voltage	90 ~ 130 VAC 1 phase 2 wire
	Current	Continuous 5A Intermittent 15 A for 10 sec.

Current Compensation	Automatic welder current compensation
Current Adjustment	Welding current 50 ~ 190 A
Voltage Build-up	Residual Voltage at AVR Terminal >2 VAC
Thermal Drift	0.05% per °C change in AVR ambient

Environment

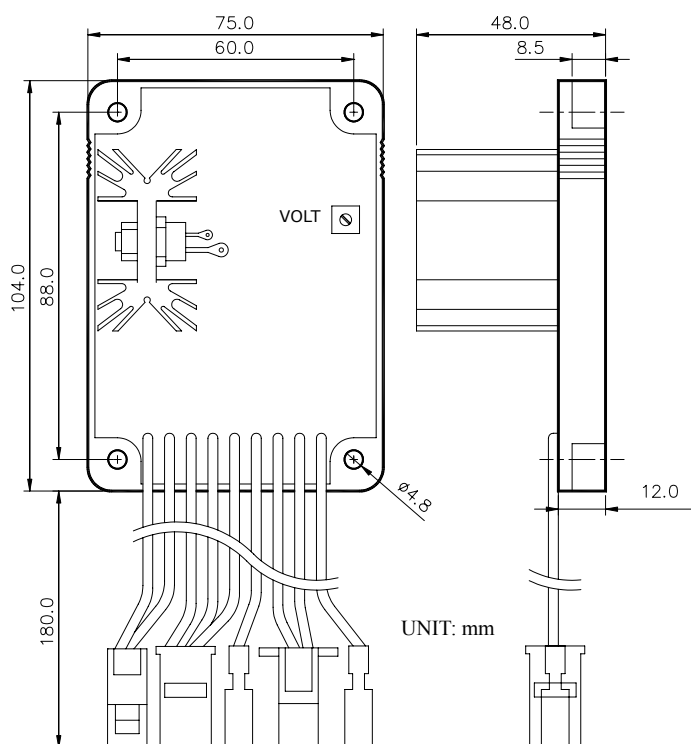
Vibration 1.5G @ 5 ~ 30 Hz 5.0G @ 30 ~ 500K Hz

Relative Humidity < 95%

Operating Temperature -40 ~ 60 °C

Storage Temperature -40 ~ 85 °C

Mechanical Specifications



Applicable Modules

Alternator Brand	Part Number
SUZUKI	CCW-210、CCW-190H
HONDA	EW-190S
DAISHIN	SGW-200HX
KATYU	SCW-190X

Physical Specifications

Dimensions	104.0 x 75.0 x 48.0 mm
Weight	212 g ± 2%

Please link to <http://www.kutai.com.tw> for detailed manual



KUTAI ELECTRONIC CO., LTD.

